



# Oasis

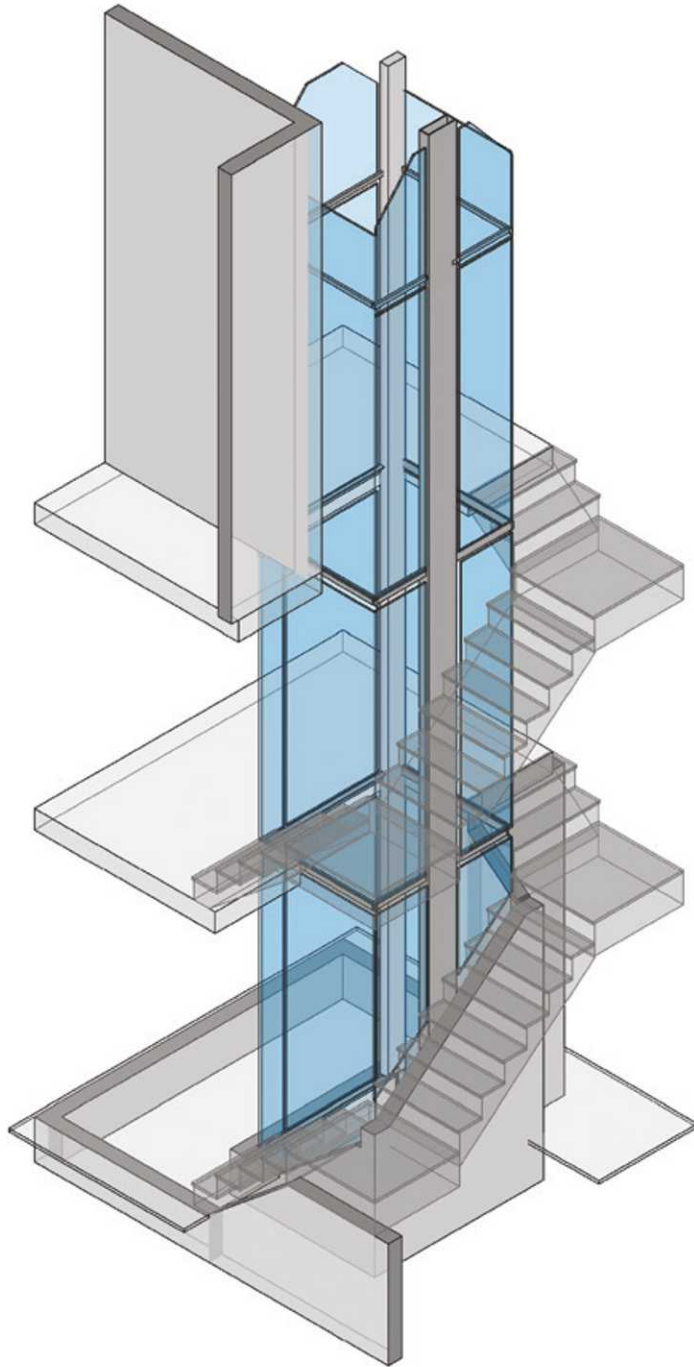
SPECIALTY GLASS

Glass Elevator | Boston

An aerial, high-angle photograph of a city's street grid, viewed from a perspective that creates a sense of depth. The entire image is overlaid with a semi-transparent blue color. The grid consists of numerous rectangular blocks, some of which are slightly offset from each other, creating a complex, interlocking pattern. The perspective is from directly above, looking down at the streets and buildings. The blue overlay is uniform in color but has some subtle variations in intensity, giving it a textured appearance. The overall effect is a stylized, modern representation of an urban environment.

[oasisspecialtyglass.com](http://oasisspecialtyglass.com)





## Residential Glass Elevator

### Luxury Condo Renovation | Union Wharf

Union Wharf is considered one of the most prestigious addresses on The Waterfront. These beautiful granite buildings were built in the 1830s as warehouses and were converted into condominiums in 1978. When Apex Carpentry was hired to renovate one of these luxury condos in 2019, it presented us with a unique problem and solution. The unit owners wanted an elevator system incorporated into the staircase that would allow for easy access to all 3 floors of the condominium. Because the owners did not want the elevator and stairwell to feel closed off from the rest of the space, a unique solution was created: A 3.5 story glass elevator shaft featuring low-iron, digitally imaged glass with stairwell surround, and at the center, a complimenting glass elevator. Oasis Specialty Glass worked closely with the builder, engineer and elevator manufacturer to make this design a reality. The result is a truly inspiring and unique solution combining both style and elegance with safety and integrity.

<b>Project:</b>	3 Story Residential Glass Elevator
<b>Location:</b>	Union Wharf Boston
<b>Builder:</b>	Apex Carpentry LLC
<b>Architect:</b>	Timothy Burke Architecture
<b>Engineer:</b>	Structures Workshop
<b>Elevator Company:</b>	Home Healthsmith LLC
<b>Glass Company:</b>	Oasis Specialty Glass
<b>Description:</b>	Residential glass elevator and shaft with staircase surround
<b>Features:</b>	1/2" Low iron glass elevator enclosure featuring Alice, digitally imaged glass.
<b>Hardware:</b>	Brushed Stainless Steel, 20 side-lites (6 lites digitally imaged), 3 Doors.



## About the Glass

### A Builder with a Vision | Fabricators with a Mission

Elevators in a residential home are challenging enough, but when the esthetics require it to be made of glass, stylish and sleek, with minimally exposed inner workings, few visionaries rise to the occasion. Oasis Specialty Glass and Apex Carpentry teamed up with Timothy Burke Architecture, engineer Erik Nelson (Structures Workshop Inc.) and Bill Bohmbach (Home Health Smith LLC, Elevator Company), to make this vision a reality. The combination of inventive engineering, building know-how and glass installation expertise by Oasis Specialty Glass created a truly breathtaking solution for this unique living space.

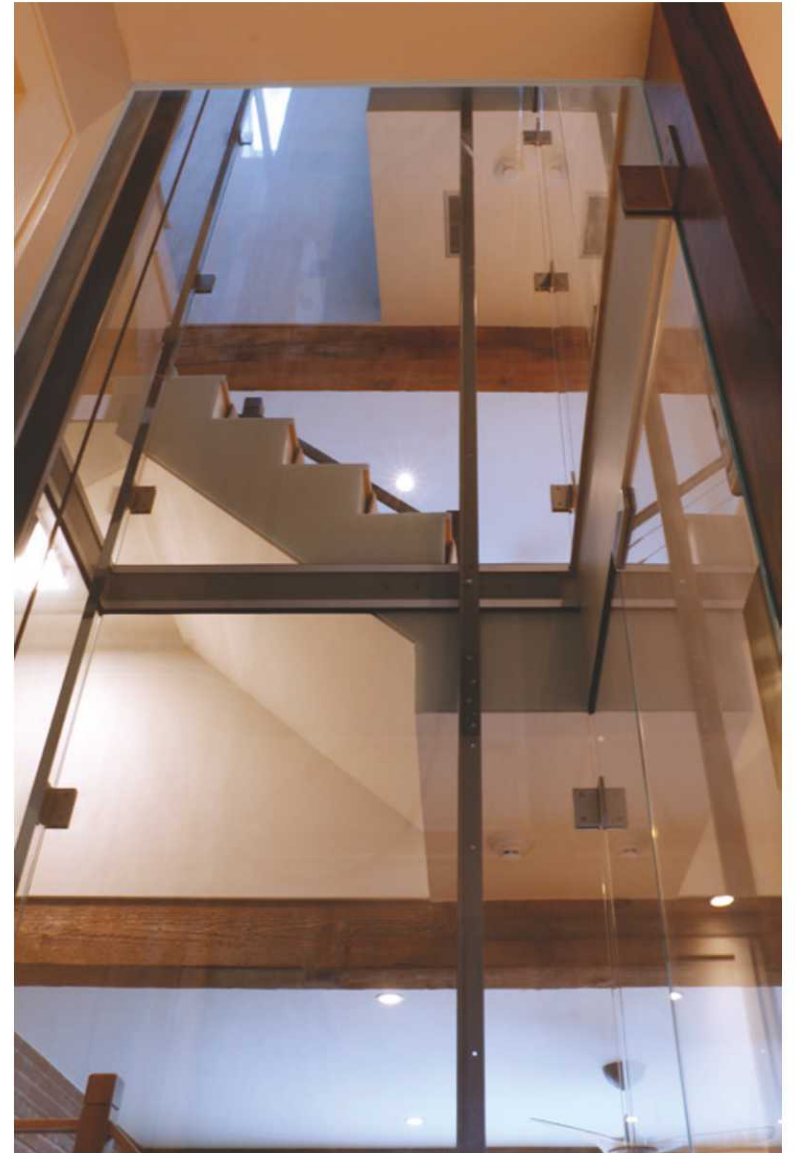
### Challenges

The main challenge with a glass elevator shaft is hiding the edges of the surrounding staircase construction. We wanted the staircase to surround the glass shaft without unfinished carpentry visible from within the elevator. To solve this problem, hand made templates were painstakingly drawn to indicate where the glass would be digitally imaged in order to hide areas where the shaft cut through each floor and where staircase edges were exposed. The result was a clean and easy to maintain solution that gives the illusion of the glass cutting cleanly through the structure of the room. Because the images are permanently embedded in the glass, no future painting or cleaning would be required for those areas of the shaft wall. Each glass panel was templated and installed by Oasis craftsmen for this truly stunning result. (see facing page for examples).

In conjunction with the clean look of pure glass, all of the control wiring for the call buttons on each of the three floors was concealed within a finished vertical wood beam that matched existing framing beams throughout the residence. The elegant solution maximized the minimalist esthetic of the entire project.

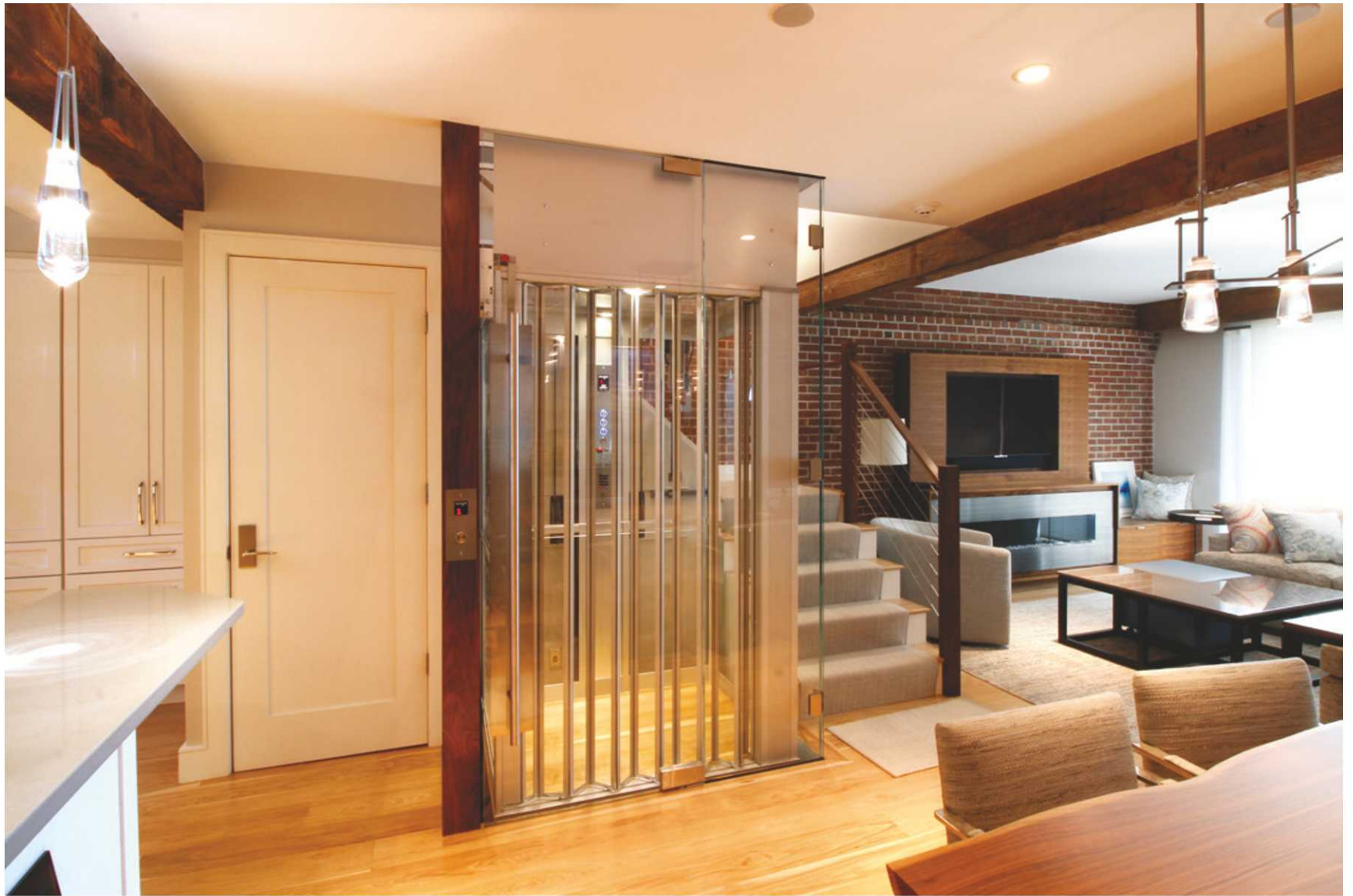


**Feature:** Staircase and floor edges were cleverly concealed with digitally Imaged glass templated by Oasis Specialty Glass. This technique was critical for hiding unfinished woodwork and areas otherwise inaccessible to cleaning.









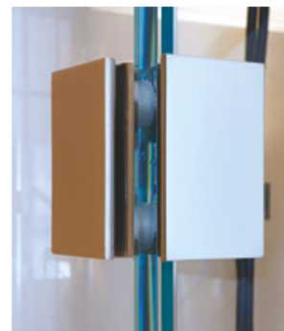
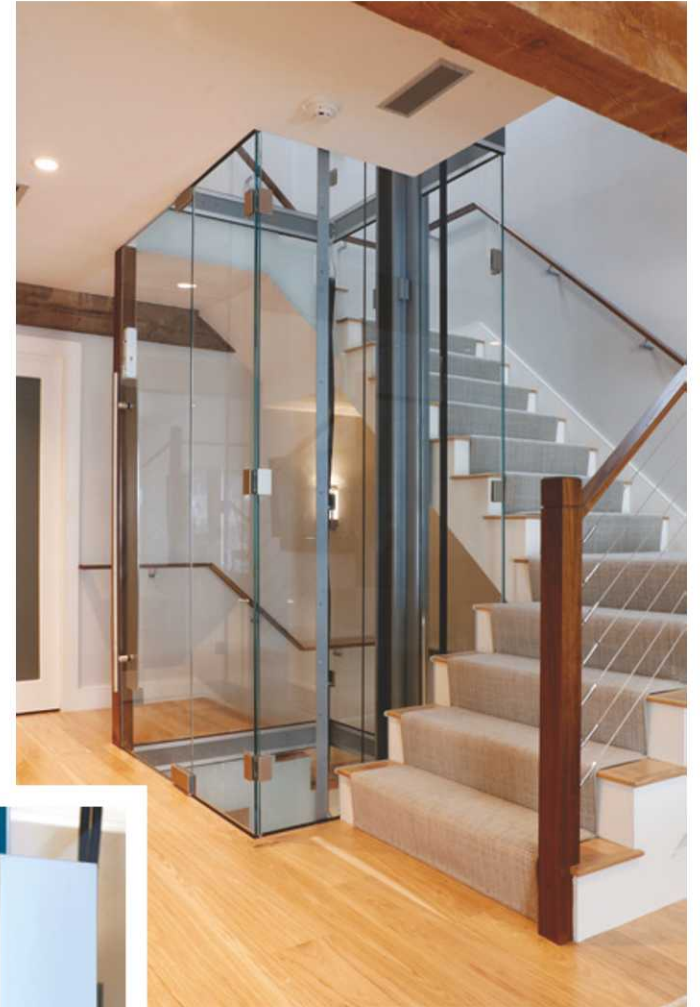


**Feature:** Elevator call boxes are mounted on finished support beams, wiring for each call box is hidden within the beam.

**Feature:** Elevator doors featured an in-room swinging 1/2" glass door and a classic/retro in-elevator sliding glass accordion door.













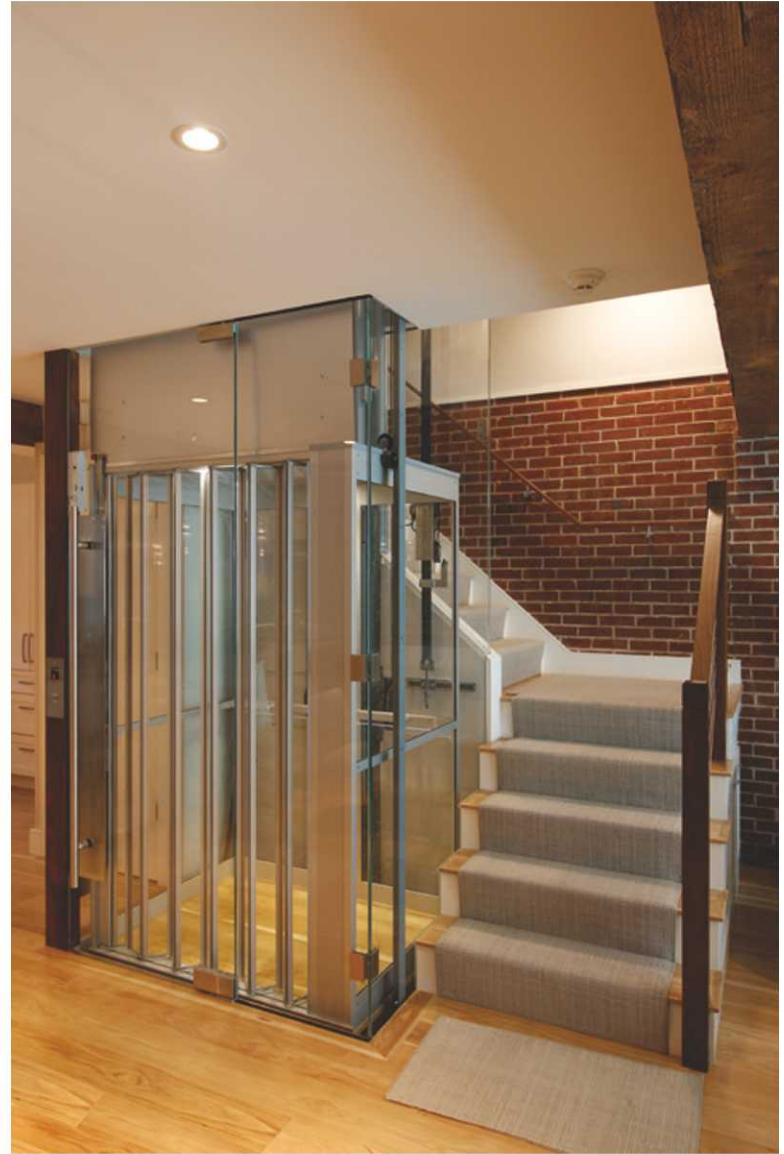
**Feature:** In order to maintain a clean minimalistic design, a single power cable suspended within the shaft powers the elevator car itself while, all call box wiring was kept hidden within a decorative vertical beam of wood.















**Feature:** Cable drums, elevator hoist system, and control box conveniently located on bottom floor, inside service area under stairwell.



WHEN IT COMES TO QUALITY SHOWER DOORS & SPECIALTY GLASS

**WE DELIVER**



**Agawam, MA**

646 Springfield St., Feeding Hills, MA 01030  
tel 413.786.8420 fax 413.786.7201

**Showroom Hours**

Mon – Fri 9:30 am – 4:30 pm  
Sat 9am – 1pm

**Weymouth, MA**

50 Finnell Drive, Weymouth, MA 02188  
tel 781.340.2700 fax 781.340.0808

**Showroom Hours**

Mon – Fri 8:30am – 4:30pm Sat 10am – 1pm  
(Closed Saturdays July & August)

**Peabody, MA**

47 Newbury Street, Peabody, MA 01960  
tel 888-340-2701 fax 978-587-3602

**Showroom Hours**

Tues – Fri 8:30am – 4:30pm  
Sat 10am – 2pm

**Avon, CT**

Plaza 44, 195 West Main St. Avon, CT 06001  
tel 860.676.1410 fax 860.677.5869

**Showroom Hours**

Tues – Fri 10am – 4:00pm  
Sat 10am – 2pm